



# TIMELESS

A collection of classic fabrics  
with a timeless appeal

# SUNBRELLA®

A BRAND THAT CARES  
ABOUT THE ENVIRONMENT

From production to use, Sunbrella® fabrics combine quality with durability to reduce their impact on the environment.



## PRODUCT LIFECYCLE MANAGEMENT

As part of its Sunbrella ReCycled offer, Sunbrella created the Endless Stories collection containing up to 50% recycled solution-dyed acrylic fibres. Our recycled fibres are sourced directly from production plants where waste is divided into colour groups and turned back into fibres. These fibres are then blended with the "virgin" Sunbrella fibres.



## LESS WASTE

Our quality Sunbrella fabrics do not rot or fade and are highly resistant over time. As our fabrics do not need to be replaced as often as traditional fabrics, they generate less waste.



## LOW WATER CONSUMPTION

In the solution-dyeing process, colour pigments are added to the yarn as it is spun, to guarantee colourfastness and save water. The small amount of water used in our weaving process is fully recycled in-house.



## ZERO LANDFILL

For over 30 years, Sunbrella has recycled its industrial waste such as yarn and packaging. Today, every Sunbrella manufacturing facility around the globe sends absolutely no waste to the landfill.



LIMITED WARRANTY

## 5 YEAR WARRANTY

Sunbrella acrylic fabrics carry a 5-year limited warranty for indoor and outdoor applications against abrasion, pilling, loss of colour and strength in normal usage and exposure conditions. See general warranty conditions at : [dckc.fr/warranty](https://dckc.fr/warranty)



## PFAS FREE

Our company has invested significant resources to find alternatives to PFAS (perfluoroalkylate) chemicals and has developed an optimal non-PFAS finish for all Sunbrella upholstery fabrics. Our fabrics will retain their water repellency, durability, bright colours, appearance, softness, texture, ease of cleaning and strength.



## REACH REGULATION

Sunbrella has developed treatments designed and applied in strict compliance with European REACH regulations.

REACH is a European regulation designed to improve the protection of human health and the environment from the risks posed by chemicals, while enhancing the competitiveness of the EU chemicals industry.



## GREENGUARD CERTIFIED

Sunbrella upholstery fabric has achieved GREENGUARD GOLD Certification. Sunbrella upholstery fabrics are certified by GREENGUARD as contributing to healthy indoor air by being a very low emitting interior product.



## OEKO-TEX LABEL

A quality that meets human-ecological requirements. Awarded with the OEKO-TEX label (class II - products with direct contact to the skin), Sunbrella fabrics are produced without hazardous substances and do not pose a threat to health, the skin or the environment.

# TIMELESS

Designed with lasting strength and cleanability built in

Timeless is a collection of over a hundred fabrics. Expertly crafted, this broad palette of colours is suitable for all projects. The fabrics can stand on their own, but are also designed to serve as the basis for more trendy compositions. They are perfect for patterned or textured combinations. Indispensable essentials that stand the test of time.



EASY  
TO CLEAN



WATER & STAIN  
RESISTANT



UV/FADE  
RESISTANT






MOLD/MILDEW  
RESISTANT



BLEACH  
CLEANABLE



BREATHABLE  
COMFORT

	STANDARDS	CLIFF	NATTÉ	SOLIDS & STRIPES
COMPOSITION		100% Sunbrella® acrylic		
FINISH		Non PFAS, Water-Repellent & Stain-Proof		
MINIMUM USEFUL WIDTH	EN 1773	140	140	137
WEIGHT	ISO 3801 g/sqm	208	290	260
ROLL LENGTH	LM	50	50	50
SPRAY TEST	ISO 4920 Class/5		5	
COLOUR FASTNESS UV INDOOR	ISO 105 B02 Class/8		8	
COLOUR FASTNESS TO WEATHER OUTDOOR	ISO 105 B04 1000 h Class/5		4-5	
FLAME RETARDANCY		All these fabrics pass the following certifications: BS 5852-1 source 0, Cal 117, NFPA 260, EN 1021-1 (cigarette test)		
CARE INSTRUCTIONS		     Ironing reinforces the treatment		

All the values have a +/-5% tolerance



Also available on special order with a flame-retardant backing that passes the following certifications: BS 5852-1 source 1, EN 1021-2 (match test), IMO FTP code part 8. Special order of 200 lm minimum per construction (with a possibility of mixing up to 4 colours). Increases fabric weight by 175 g/m².



Also available on special order with a waterproof backing that brings a waterproofness >1500 mm according to the schmerber test. Special order of 200 lm minimum per construction (with a possibility of mixing up to 4 colours). Increases fabric weight by 100 g/m².



Find more technical  
information  
with the digital  
data sheets!

# NATTÉ

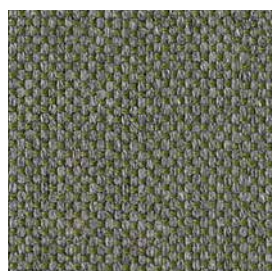


OPTIONAL FINISHES\* :



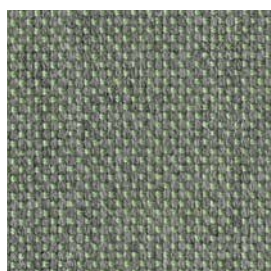
POSEDONIA  
NAT 10111 140

**NEW**



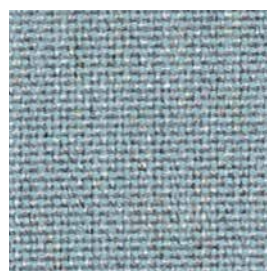
BAMBOO  
NAT 10112 140

**NEW**



AGAVE  
NAT P097 140

**NEW**



FROSTY CHINÉ  
NAT 10025 140



CARBON SKY  
NAT 10064 140



CARBON BEIGE  
NAT 10065 140



NATURE GREY  
NAT 10040 140



NAXOS  
NAT 10255 140

**NEW**



BLUESTONE  
NAT 10083 140

**NEW**



COSMOS  
NAT P094 140

**NEW**



CHESTNUT  
NAT 10102 140

**NEW**



TONKA  
NAT 10101 140

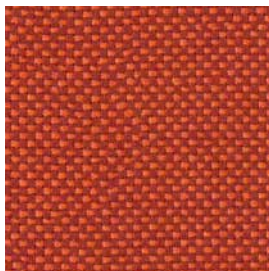


POMPEI  
NAT 10256 140

**NEW**

\* See the characteristics on the technical page





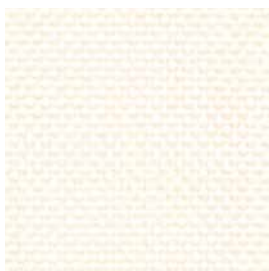
**SPRITZ**  
NAT 10254 140

**NEW**



**JASPE**  
NAT P100 140

**NEW**



**WHITE**  
NAT 10020 140



**NATURE**  
NAT 10014 140



**CANVAS**  
NAT 10021 140



**SUNLIGHT**  
NAT 10250 140

**NEW**



**HEATHER BEIGE**  
NAT 10028 140



**HEATHER GREY**  
NAT 10029 140



**HEATHER CHALK**  
NAT 10150 140



**LINEN CHALK**  
NAT 10151 140



**GREY CHINÉ**  
NAT 10022 140



**GRAUMEL CHALK**  
NAT 10152 140



**TAUPE CHALK**  
NAT 10155 140



**ANTIQUE**  
NAT 5077 140

**NEW**



**CHARCOAL CHINÉ**  
NAT 10063 140



**DARK TAUPE**  
NAT 10059 140



**SOOTY**  
NAT 10030 140



**MASCARA**  
NAT 10078 140

**NEW**



# SOLIDS

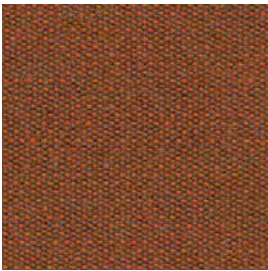


OPTIONAL FINISHES\* :



**MERLOT**  
SJA 3997 137

**NEW**



**WALNUT**  
SJA 3996 137

**NEW**



**EBENE**  
SJA P091 137

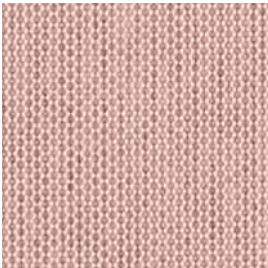
**NEW**



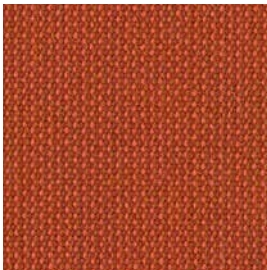
**AUTUMN**  
SJA 3982 137



**BURGUNDY**  
SJA 5436 137

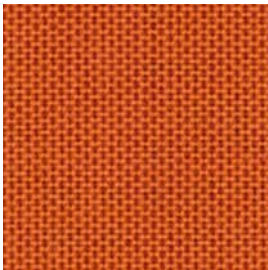


**BLUSH**  
SJA 3965 137

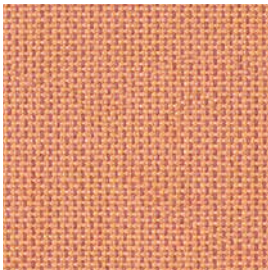


**ANTELOPE**  
SJA P107 137

**NEW**

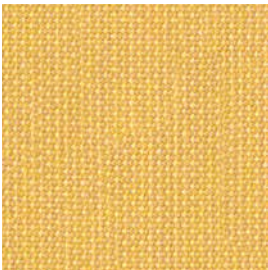


**PUMPKIN**  
SJA 3969 137



**CORAL**  
SJA P101 137

**NEW**



**HIVE**  
SJA 4000 137

**NEW**



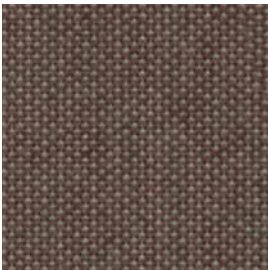
**LOGO RED**  
SJA 5477 137



**PEPPER**  
SJA 3968 137



**PARIS RED**  
SJA 3728 137



**MINK BROWN**  
SJA 3127 137

\* See the characteristics on the technical page





ANTIQUE BEIGE  
SJA 5422 137

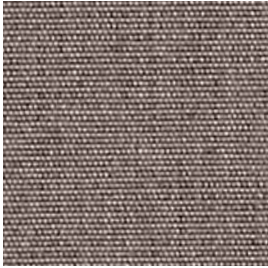


HEATHER BEIGE  
SJA 5476 137



TRUSH  
SJA 3995 137

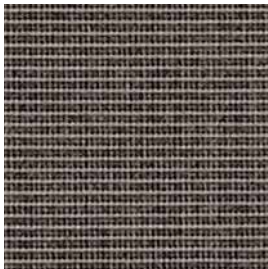
NEW



TAUPE CHINÉ  
SJA 3907 137



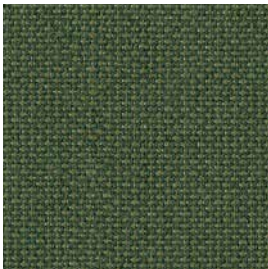
TAUPE  
SJA 3729 137



DARK SMOKE  
SJA 3792 137

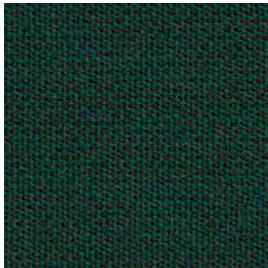


ALMOND  
SJA 3983 137



CALATHEA  
SJA 3999 137

NEW

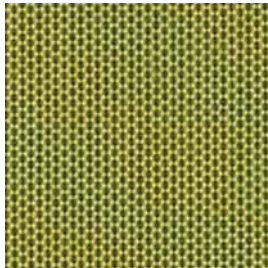


PINEA  
SJA 3998 137

NEW



MACAO  
SJA 3738 137

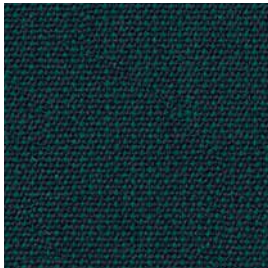


lichen  
SJA 3970 137



CELADON  
SJA P103 137

NEW



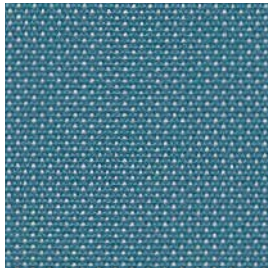
COMO  
SJA P089 137

NEW



BELHARRA  
SJA P105 137

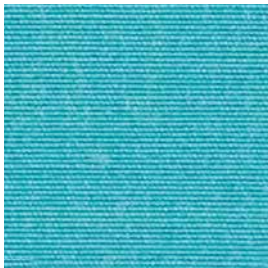
NEW



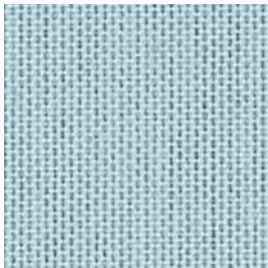
ADRIATIC  
SJA 3941 137



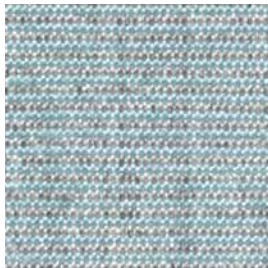
TRUE BLUE  
SJA 5499 137



ARUBA  
SJA 5416 137



CURACAO  
SJA 3964 137



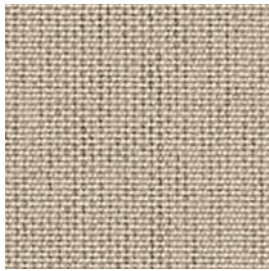
MINERAL BLUE CHINÉ  
SJA 3793 137



FJORD  
SJA P093 137

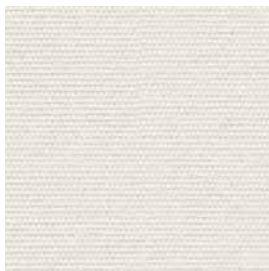
NEW





PAPYRUS  
SJA P055 137

NEW



NATURAL  
SJA 5404 137



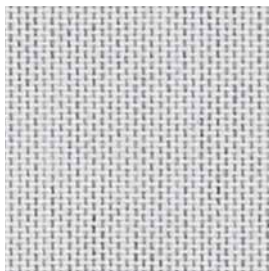
CANVAS  
SJA 5453 137



LIN  
SJA 3780 137



STONE  
SJA 3988 137



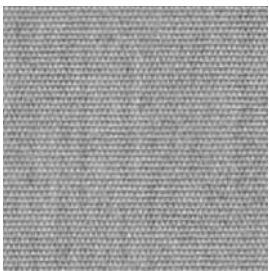
MARBLE  
SJA 3966 137



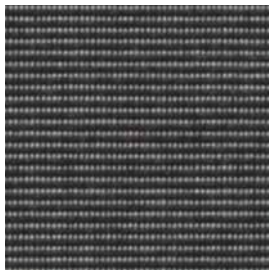
SILVER GREY  
SJA 3741 137



SHINGLES  
SJA 3706 137



LEAD CHINÉ  
SJA 3756 137



CHARCOAL  
SJA 3705 137

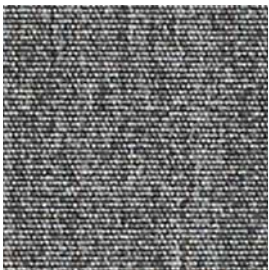


TITANIUM  
SJA P054 137

NEW



ARDOISE  
SJA 3737 137

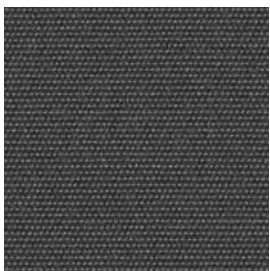


FLANELLE  
SJA 3757 137



MISTRAL  
SJA P104 137

NEW



CARBON  
SJA 3906 137



SOOTY  
SJA 3758 137



BLACK  
SJA 5408 137



# STRIPES

NEW

REPEAT:  
45,4cm

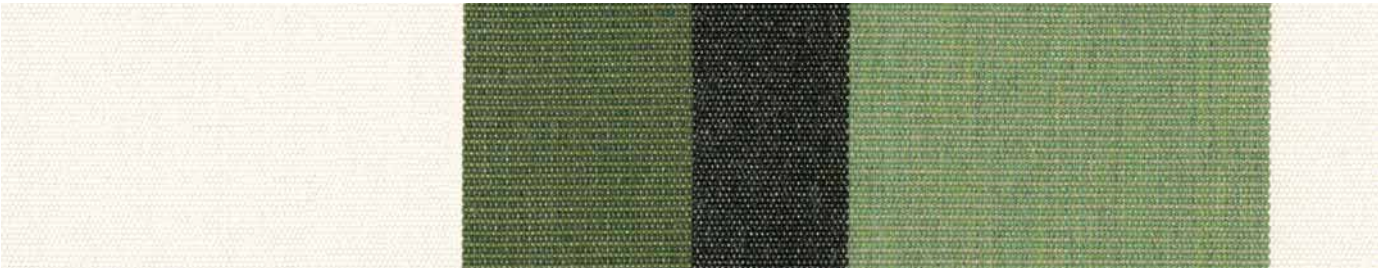


OPTIONAL FINISHES\* :



CANYON VERDON  
SJA 4002 137

LIFT TO SEE THE PICTURE OF THE WHOLE STRIPE



CANYON COLCA  
SJA 4003 137

LIFT TO SEE THE PICTURE OF THE WHOLE STRIPE



CANYON TENAYA  
SJA 4004 137

LIFT TO SEE THE PICTURE OF THE WHOLE STRIPE

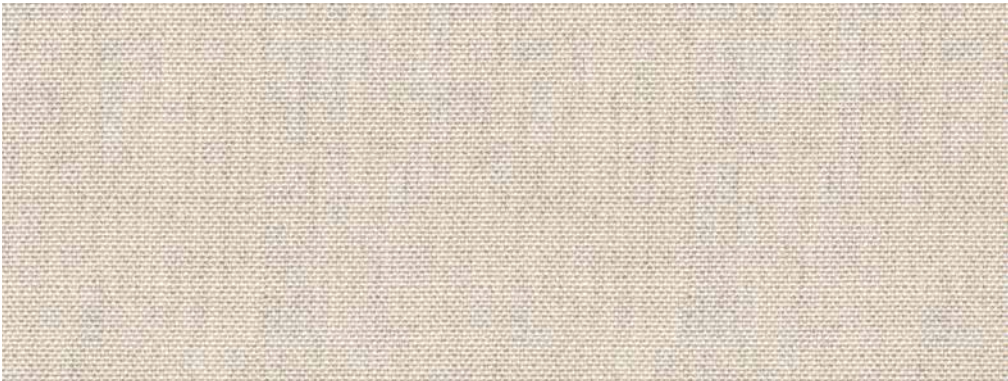
\* See the characteristics on the technical page

CLIFF

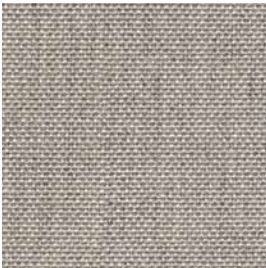
NEW



OPTIONAL FINISHES\* :



**OBVIOUS**  
CLI B123 140



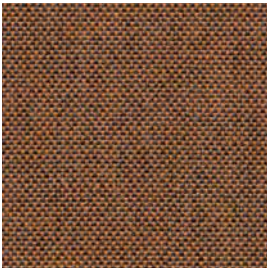
**CLOUD**  
CLI B125 140



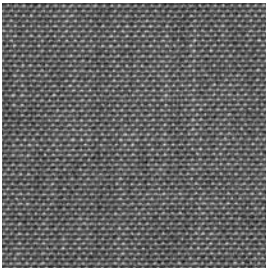
**MIST**  
CLI B124 140



**JACKET**  
CLI B128 140



**PETRA**  
CLI B129 140



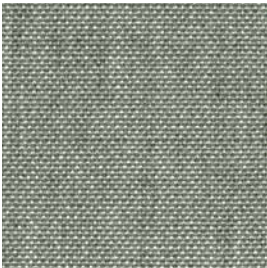
**SLATE**  
CLI B126 140



**DENIM**  
CLI B127 140



**FIR**  
CLI B131 140



**SPA**  
CLI B130 140

\* See the characteristics on the technical page







[dckc.fr/sunbrella](https://dckc.fr/sunbrella)

